

Dream it
Believe it
Build it

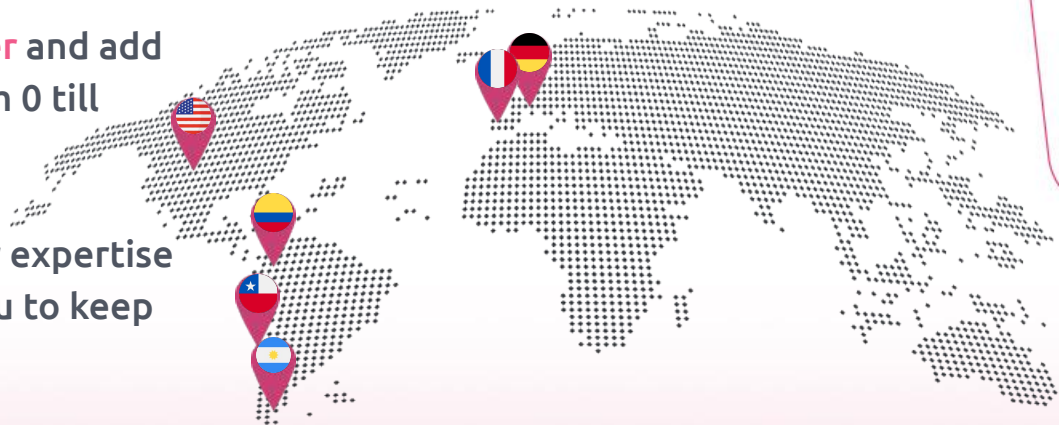




Outside the Cube is a dedicated team of IT professionals capable of working with companies from any country and language.

Our goal is to become a **strategic partner** and add critical value every step of the way, from 0 till delivery and beyond.

Because although you may not need our expertise once the project has ended, we want you to keep **choosing** us and the services we provide



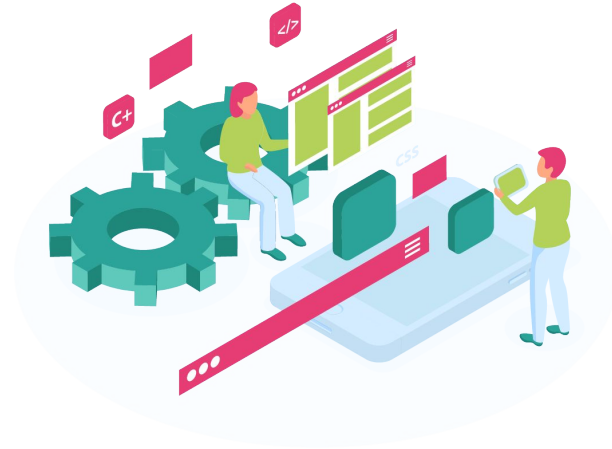
Services

Choose to develop your projects internally or outsource our end-to-end service.

Augmentation



End-to-end Development



We have deep expertise in modern technologies.
Like these...

Frontend



Mobile



+



Backend



...and these!

BD



CI/CD



Cloud



Others





Ownership

Transparency is one of our core values.


That's why:



**We don't condone
vendor lock-in practices**



What we create is 100% yours.
From the code, to documentation,
repositories, tools and know-how.

 **Giving you the tools and knowledge to run our finalised solutions internally is part of our mindset.**

Augmentation

Give extra power to your team and scale your operation.

We take care of:

- ✓ Recruitment
- ✓ Background checks
- ✓ Soft and hard skills testing
- ✓ On-boarding
- ✓ Managing and replacing



Augmentation

First we need to determine the needed information and expertise.

Afterwards, our augmentation process begins:

01 Sign mutual NDA

02 Define roles and skills needed

03 Hiring process

04 Client approval

05 Sign contract with timeline, costs and policies.

06 Introduction and onboarding of new team members

Development

Cover your business needs with our end-to-end development service, without compromising the full picture.

All of our solution are:



- ✓ Business goals driven
- ✓ Self-managed
- ✓ Security oriented
- ✓ Cost-aware
- ✓ Scalable

Why choose end-to-end?

Choosing an end-to-end development service has a few benefits when compared to working with different providers at the same time.

Dividing work between providers

- ❌ Decentralized communication
- ❌ Different teams working on the same project
- ❌ Budget and deadline issues
- ❌ Different processes and standards

End-to-end Development Service

- ✅ One point of contact
- ✅ Expertise and knowledge in one team
- ✅ Reduced time and cost
- ✅ Well defined, proven process

Development

From defining technical and business requirements till the ready-to-market solution, our end-to-end service follows a proven process.

01 Product and business analysis

02 Technical and architecture design

03 UI/UX Design

04 Development

05 Testing

06 Cloud infrastructure
and CI/CD pipelines

Some of our clients



QLOGIK



social



Ready to get your project started?



info@outsidethecube.com



+54 11-6710-6700



outsidethecube.com



[outsidethecube](https://www.linkedin.com/company/outsidethecube)



[@outsidethecubeok](https://www.instagram.com/outsidethecubeok)